



LABOR SITUATION

Office of Research

Danté Bartolomeo, Commissioner

FOR IMMEDIATE RELEASE

March 2022 Data

CT Unemployment Rate = 4.6%

US Unemployment Rate = 3.6%

CT jobless rate drops three-tenths to 4.6%; state job gains resilient (+4,600) in March

WETHERSFIELD, April 14, 2022 – Connecticut nonfarm payroll employment rose by 4,600 (0.3%) and the state’s unemployment rate fell to 4.6% in March 2022 (preliminary) on a seasonally adjusted basis. The statewide payroll employment level, at 1,646,400, is now 47,700 (3.0%) positions more than the March 2021 benchmarked job estimate of 1,598,700. Connecticut has now recovered 81.8% (236,800) of the 289,400 nonfarm positions lost in the March and April 2020 COVID trough. The preliminary March 2022 unemployment rate at 4.6%, fell three-tenths of a percent over the month on a 4,929 drop in the number of unemployed. The U.S. Bureau of Labor Statistics (BLS), along with their state partners, produce these labor indicators from two different surveys of businesses and households.

“Connecticut has had two consecutive months of solid job increases to build on the growth we saw last year,” said Patrick Flaherty, Director of the Office of Research at the Connecticut Department of Labor. “Construction and manufacturing have shown particular strength in recent months. The unemployment rate declined 2.4% points in the past year. Before the pandemic, there had not been a 12-month period with a decline that large since the 1970s.”

Connecticut’s private sector gained a solid 5,500 jobs (0.4%) in March 2022 to 1,421,700 and is higher by 45,600 positions (3.3%) from the revised March 2021 levels (1,376,100). The state’s private sector is 84.7% recovered from the 2020 COVID employment low. The **government supersector**, however, was lower by 900 jobs (-0.4%) in March 2022 to a level of 224,700. This is just 2,100 (0.9%) positions above March 2021 levels. The public sector is only 49.2% recovered from the COVID lockdown job loss. The government *supersector* in Connecticut consists of all federal, state, local, and tribal employment, including public education and Native American casino employment located on reservation land.

Seven of the ten major industry *supersectors* generated employment gains, while three declined in March 2022 (preliminary).

The seven Connecticut industry *supersectors* that increased in March 2022:

Increasing Sectors			
Industry Sector	Amount of Increase	Percent Change	March 2022 Employment
Professional & Business Services	+2,900	1.4%	215,000
Construction & Mining	+1,300	2.1%	63,300
Trade, Transportation, & Utilities	+900	0.3%	297,800
Leisure & Hospitality	+500	0.3%	144,600
Manufacturing	+300	0.2%	158,400
Education & Health Services	+200	0.1%	334,200
Other Services	+100	0.2%	60,100

The three industry *supersectors* that decreased:

Decreasing Sectors			
Industry Sector	Amount of Decrease	Percent Change	March 2022 Employment
Government	-900	-0.4%	224,700
Financial Activities	-600	-0.5%	117,700
Information	-100	-0.3%	30,600

Connecticut Labor Market Areas (LMAs): Four of the six Connecticut **LMAs**, that are seasonally adjusted by the BLS, put forth March employment gains, while the **Bridgeport-Stamford-Norwalk LMA** (-0.3%, 394,300) declined by 1,200 positions and the **Waterbury LMA** was unchanged. The **Bridgeport LMA** had been strong the first two months of the year. The **Hartford LMA** (0.4%, 567,700) led all monthly gaining regions in magnitude, adding 2,300 jobs. The **New Haven LMA** (0.4%, 295,100) was slightly larger in monthly percentage gain adding 1,300 positions. This was followed by the **Norwich-New London-Westerly LMA** (0.2%, 119,000), which added 200 jobs, and the **Danbury LMA** (0.1%, 74,900) which contributed 100.

Note: The six major Connecticut LMAs are estimated independently from the statewide data by the BLS and cover more than 90% of the nonfarm employment in the state. Thus, estimates will not exactly sum to the statewide total.

Hours and Earnings: The March 2022 **private sector** workweek, not seasonally adjusted, averaged 33.9 hours. This is down three-tenths from the March 2021 estimate (34.2). Average hourly earnings at \$33.98, not seasonally adjusted, were up by \$0.48 (1.4%) from the March 2021 estimate of \$33.50. The combined March 2022 private sector weekly wage averaged \$1,151.92, higher by \$6.22 from a year ago (0.5%, \$1,145.70). The Consumer Price Index for All Urban Consumers (CPI-U, U.S. City Average, not seasonally adjusted) in March 2022 was up 8.5% from a year ago. *Current all-employee private sector hours and earnings estimates can be volatile due to fluctuating sample responses.*

Labor Force Data (residential household survey)

The March 2022 unemployment rate for Connecticut was estimated by the BLS Local Area Unemployment Statistics program (LAUS) to be **4.6%** (seasonally adjusted), down by three-tenths of a percentage point from the recently revised February 2022 level of 4.9%. The Connecticut jobless rate was 7.0% in March 2021. The U.S. unemployment rate for March 2022 was 3.6%, down two-tenths of a percentage point from the February 2022 rate of 3.8% and down from the March 2021 jobless rate of 6.0%.

Unemployment claims for first-time filers (seasonally adjusted) in Connecticut were an average of 2,275 per week in March 2022, down 562 (-19.8%) from the February 2022 (2,837) level and much lower by 5,505 claims (-70.8%) from the average weekly count of 7,780 in March 2021. This level of average weekly initial claims is now well below the February 2020 levels (2,937) - just before the COVID lockdown and incidentally a new *all-time series low* going back to 1980, when the data series began.

*The nonfarm employment estimate, derived from a survey of businesses, is a measure of jobs in the state; the unemployment rate and labor force estimates are based on a household survey, and measure the work status of people who live in Connecticut. Overall, as the national and state economies recover, volatility in monthly numbers can be expected. **Job and employment estimates are best understood in the context of their movement over several months rather than observed changes in a single month's value.***

Next Connecticut Labor Situation release: Thursday, May 19, 2022
(Preliminary April 2022 data)

Contact:
Communications, CT Department of Labor
CTDOL.SocialMedia@ct.gov

Labor Market Information is available at: www.ctworkforce.info
200 Folly Brook Boulevard, Wethersfield, CT 06109-1114 www.ct.gov/dol
An Equal Opportunity/Affirmative Action Employer

NONFARM EMPLOYMENT

Jobs - by Place of Work

CONNECTICUT AND THE UNITED STATES - Seasonally Adjusted

	March 2022 P	February 2022 R	January 2022	December 2021	March 2022	Over Month Change	Rate	Over Year Change	Rate
CONNECTICUT	1,646,400	1,641,800	1,636,400	1,635,800	1,598,700	4,600	0.3%	47,700	3.0%
Total Private	1,421,700	1,416,200	1,410,200	1,410,500	1,376,100	5,500	0.4%	45,600	3.3%
Goods Producing Industries									
Mining	600	600	600	500	500	0	0.0%	100	20.0%
Construction	62,700	61,400	61,600	61,700	59,400	1,300	2.1%	3,300	5.6%
Manufacturing	158,400	158,100	157,400	156,400	153,000	300	0.2%	5,400	3.5%
Durable Goods	123,200	123,000	122,500	121,900	120,200	200	0.2%	3,000	2.5%
Nondurable Goods	35,200	35,100	34,900	34,500	32,800	100	0.3%	2,400	7.3%
Service Providing Industries									
Trade, Transportation & Utilities	297,800	296,900	292,900	291,700	290,000	900	0.3%	7,800	2.7%
Wholesale	59,700	59,500	58,300	58,100	56,700	200	0.3%	3,000	5.3%
Retail	169,100	168,600	166,400	165,600	168,100	500	0.3%	1,000	0.6%
Transp, Warehousing & Utilities	69,000	68,800	68,200	68,000	65,200	200	0.3%	3,800	5.8%
Information	30,600	30,700	30,300	30,200	29,300	-100	-0.3%	1,300	4.4%
Financial Activities	117,700	118,300	117,600	116,700	118,800	-600	-0.5%	-1,100	-0.9%
Finance & Insurance	98,500	99,000	98,500	97,700	100,200	-500	-0.5%	-1,700	-1.7%
Real Estate, Rental & Leasing	19,200	19,300	19,100	19,000	18,600	-100	-0.5%	600	3.2%
Professional & Business Services	215,000	212,100	213,700	215,300	210,900	2,900	1.4%	4,100	1.9%
Prof, Scientific & Tech Services	96,600	97,100	96,800	96,800	93,900	-500	-0.5%	2,700	2.9%
Management of Companies	30,400	30,300	30,100	30,100	30,500	100	0.3%	-100	-0.3%
Admn & Support & Waste Mgt Serv	88,000	84,700	86,800	88,400	86,500	3,300	3.9%	1,500	1.7%
Educational & Health Services	334,200	334,000	334,300	334,900	333,200	200	0.1%	1,000	0.3%
Educational Services	67,500	66,300	66,700	66,700	65,400	1,200	1.8%	2,100	3.2%
Health Care & Social Assistance	266,700	267,700	267,600	268,200	267,800	-1,000	-0.4%	-1,100	-0.4%
Leisure and Hospitality	144,600	144,100	141,900	142,600	124,100	500	0.3%	20,500	16.5%
Arts, Entertainment & Recreation	25,600	25,200	23,600	24,200	20,900	400	1.6%	4,700	22.5%
Accommodation & Food Services	119,000	118,900	118,300	118,400	103,200	100	0.1%	15,800	15.3%
Other Services	60,100	60,000	59,900	60,500	56,900	100	0.2%	3,200	5.6%
Government**	224,700	225,600	226,200	225,300	222,600	-900	-0.4%	2,100	0.9%
UNITED STATES	150,925,000	150,494,000	149,744,000	149,240,000	144,431,000	431,000	0.3%	6,494,000	4.5%

LABOR MARKET AREAS (LMA)

Labor Market Area employment estimates are made independently of Statewide estimates.

Seasonally Adjusted data	March 2022 P	February 2022 R	January 2022	December 2021	March 2022	Over Month Change	Rate	Over Year Change	Rate
Bridgeport-Stamford-Norwalk	394,300	395,500	391,500	389,500	380,400	-1,200	-0.3%	13,900	3.7%
Danbury	74,900	74,800	74,700	74,700	73,100	100	0.1%	1,800	2.5%
Hartford	567,700	565,400	560,400	562,900	555,600	2,300	0.4%	12,100	2.2%
New Haven	295,100	293,800	292,500	291,400	283,900	1,300	0.4%	11,200	3.9%
Norwich-New London-Westerly, RI	119,000	118,800	118,300	118,300	116,700	200	0.2%	2,300	2.0%
Waterbury	65,700	65,700	65,900	65,600	63,900	0	0.0%	1,800	2.8%
<i>Not Seasonally Adjusted data (Non-Classified Areas, State estimated - not BLS)</i>									
Enfield	41,100	41,100	41,300	42,100	41,200	0	0.0%	-100	-0.2%
Torrington-Northwest	31,000	31,100	31,200	31,800	30,300	-100	-0.3%	700	2.3%
Danielson-Northeast	26,000	26,000	26,000	26,500	25,600	0	0.0%	400	1.6%

* Less than 0.05% ** Includes Native American tribal government employment

P = Preliminary

R = Revised

Starting with March, 2011, our monthly statewide and major LMA nonfarm job estimates have been taken over by the US Department of Labor Bureau of Labor Statistics. This is the final phase of transition in this program, which began in 2008. As a result of changes in the estimation procedures, you are likely to see more variability in month-to-month estimates of job counts. Caution should be used in interpreting any single month's estimate. The data are best interpreted to identify trends and cycles over several months and quarters. If you have any questions about these changes, please email us at: dol.lmi@ct.gov. Danbury and Waterbury LMA's are now back to being seasonally adjusted.

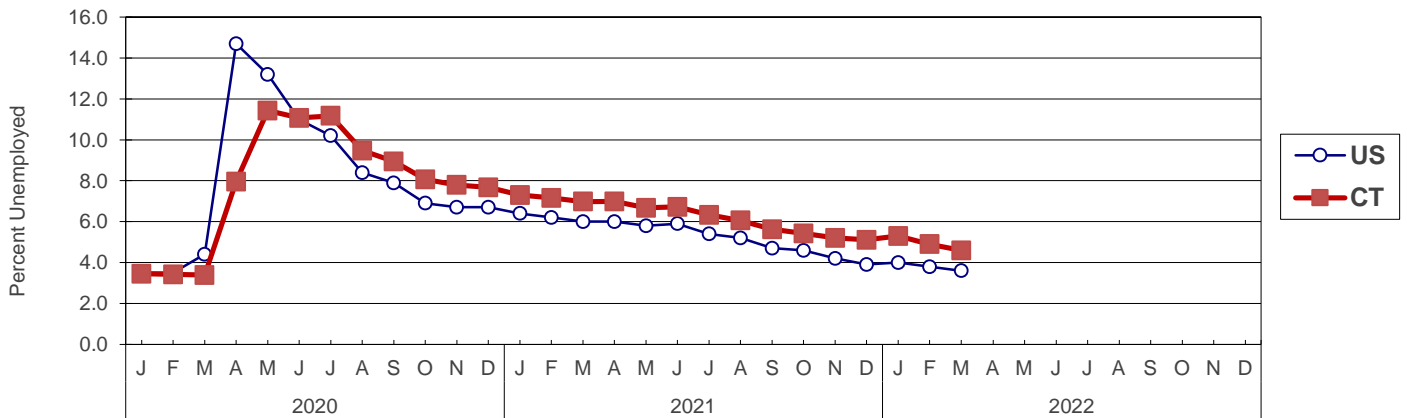
UNEMPLOYMENT

Persons Unemployed - by Place of Residence

CONNECTICUT AND THE UNITED STATES - Seasonally Adjusted

	Mar 2022 P		Mar 2021 R		Change		Feb 2022 R	
	Number	Rate	Number	Rate	Number	Points	Number	Rate
CONNECTICUT								
Unemployed	86,200	4.6	129,000	7.0	-42,800	-2.4	91,100	4.9
Labor Force	1,879,400		1,847,900		31,500		1,869,100	
UNITED STATES								
Unemployed	5,952,000	3.6	9,691,000	6.0	-3,739,000	-2.4	6,270,000	3.8
Labor Force	164,409,000		160,631,000		3,778,000		163,991,000	

U.S. AND CONNECTICUT UNEMPLOYMENT RATES - Seasonally Adjusted 2020 - 2022



LABOR MARKET AREAS - Not Seasonally Adjusted

	Mar 2022 P		Mar 2021 R		Change		Feb 2022 R	
	Number	Rate	Number	Rate	Number	Points	Number	Rate
Bridgeport-Stamford	20,000	4.3	33,300	7.5	-13,300	-3.2	23,400	5.1
Danbury	4,000	3.8	6,600	6.5	-2,600	-2.7	4,700	4.5
Danielson-Northeast*	1,900	4.3	2,900	7.1	-1,000	-2.8	2,200	5.0
Worcester NECTA	1,800	4.3	2,800	7.1	-1,000	-2.8	2,100	5.1
Hampton	100	3.5	100	5.9	0	-2.4	100	3.9
Enfield	2,000	4.0	3,200	6.7	-1,200	-2.7	2,300	4.6
Hartford	26,300	4.2	44,600	7.3	-18,300	-3.1	30,700	5.0
New Haven	13,100	3.9	22,200	6.9	-9,100	-3.0	15,300	4.6
Norwich-New London	6,300	4.7	11,000	8.2	-4,700	-3.5	7,500	5.6
Torrington-Northwest**	2,000	4.3	3,300	7.3	-1,300	-3.0	2,300	5.0
Torrington NECTA	1,300	5.0	2,200	8.5	-900	-3.5	1,500	5.8
Litchfield	700	3.5	1,100	5.8	-400	-2.3	800	4.0
Waterbury	6,000	5.4	9,800	9.1	-3,800	-3.7	6,900	6.3
CONNECTICUT	81,100	4.3	135,900	7.4	-54,800	-3.1	94,500	5.0
UNITED STATES	6,168,000	3.8	9,905,000	6.2	-3,737,000	-2.4	6,782,000	4.1

P = Preliminary

R = Revised

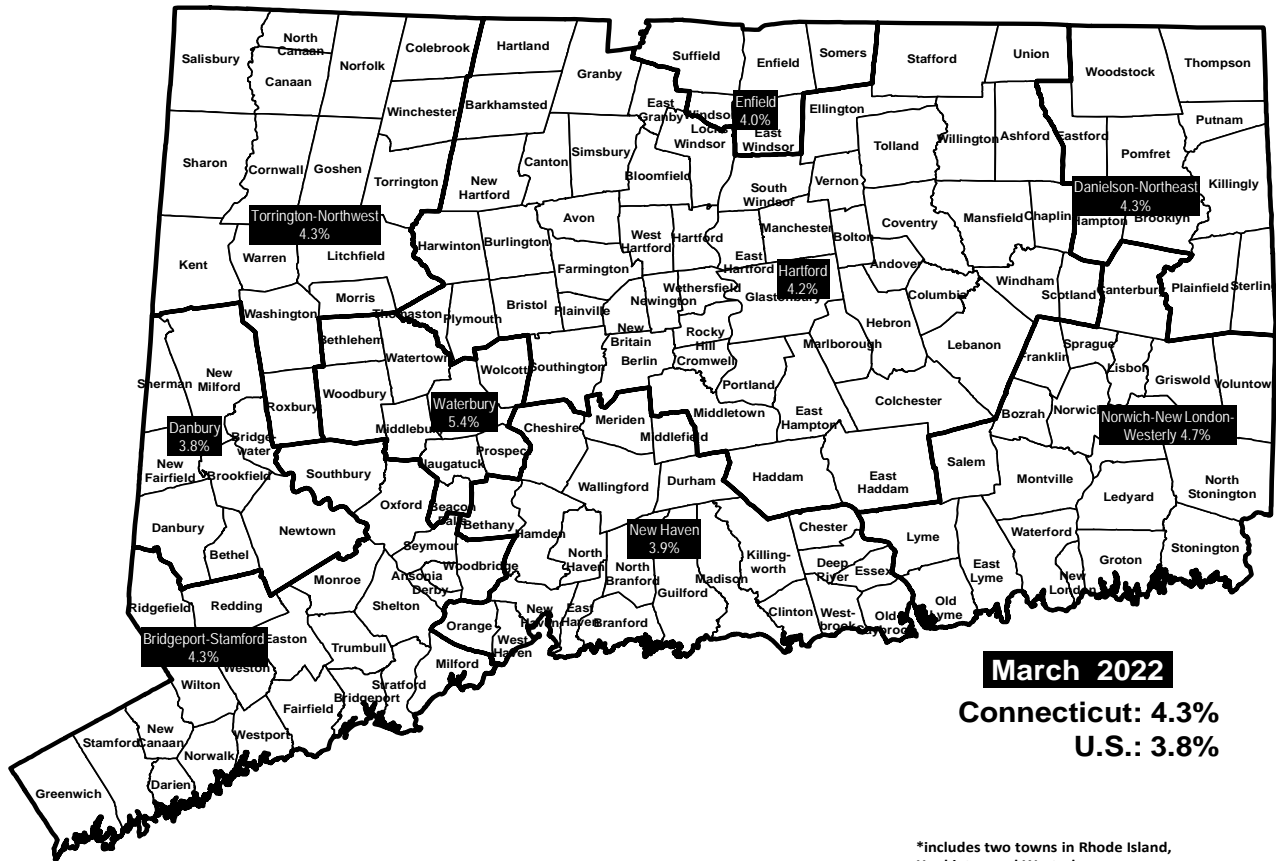
Labor force data included in this publication are developed in cooperation with the U.S. Department of Labor, Bureau of Labor Statistics.

* Worcester NECTA, CT part and Hampton LMA are combined ** Torrington Micropolitan NECTA and Litchfield LMA are combined

UNEMPLOYMENT RATES

Not Seasonally Adjusted

LABOR MARKET AREAS



HOURS AND EARNINGS

CONNECTICUT Statewide - Not Seasonally Adjusted

	Average Weekly Earnings				Average Weekly Hours				Average Hourly Earnings			
	Mar. 2022 P	Mar. 2021	Change over Yr.	Feb. 2022 R	Mar. 2022 P	Mar. 2021	Change over Yr.	Feb. 2022 R	Mar. 2022 P	Mar. 2021	Change over Yr.	Feb. 2022 R
Private Industry All Employees	\$1,151.92	\$1,145.70	\$6.22	\$1,160.08	33.9	34.2	-0.3	34.0	\$33.98	\$33.50	\$0.48	\$34.12
Manufacturing* Production Workers	\$1,109.97	\$1,098.50	\$11.47	\$1,109.92	40.1	39.6	0.5	40.2	\$27.68	\$27.74	-\$0.06	\$27.61

* Production worker data have been impacted by the loss of a large, high-paying manufacturer from the monthly sample.

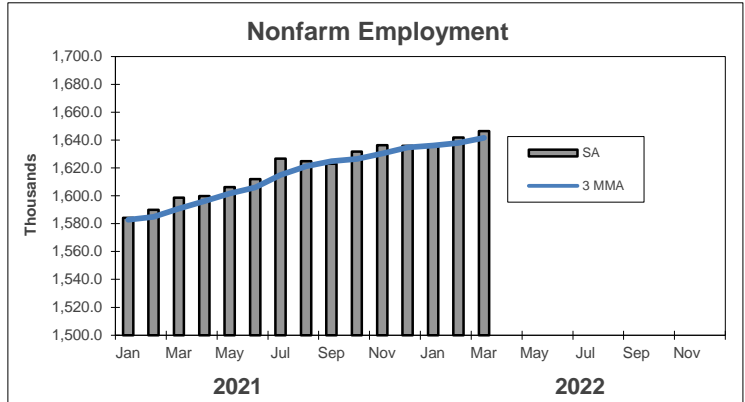
P = Preliminary R = Revised

Hours and earnings are also developed for the state's major industry sectors and Labor Market Areas. They can be found on our website at: www1.ctdol.state.ct.us/lmi

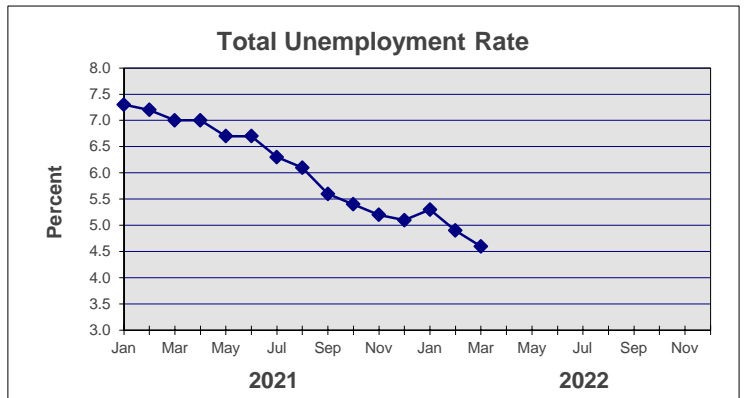
TRENDS

Seasonally Adjusted

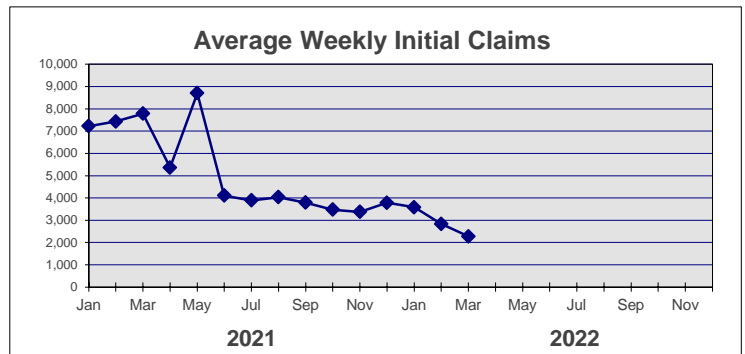
	Nonfarm Employment (000s)	Total Unemployment Rate
2021		
Jan	1,584.1	7.3
Feb	1,590.0	7.2
Mar	1,598.7	7.0
Apr	1,599.8	7.0
May	1,606.3	6.7
Jun	1,612.0	6.7
Jul	1,626.6	6.3
Aug	1,624.7	6.1
Sep	1,622.9	5.6
Oct	1,631.6	5.4
Nov	1,636.3	5.2
Dec	1,635.8	5.1



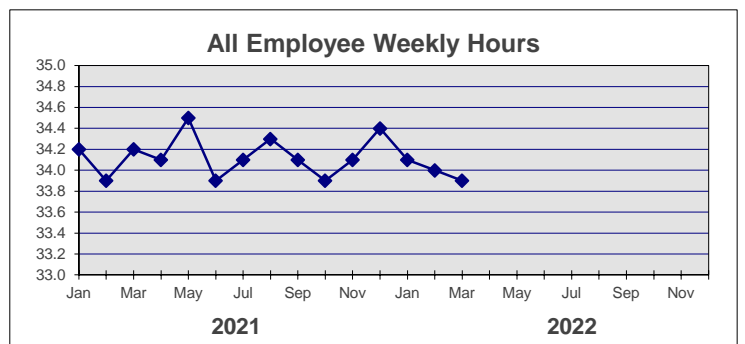
2022		
Jan	1,636.4	5.3
Feb	1,641.8 R	4.9 R
Mar	1,646.4 P	4.6 P
Apr		
May		
Jun		
Jul		
Aug		
Sep		
Oct		
Nov		
Dec		



	Avg Weekly Initial Claims	All Employee Weekly Hours*
2021		
Jan	7,226	34.2
Feb	7,431	33.9
Mar	7,780	34.2
Apr	5,366	34.1
May	8,702	34.5
Jun	4,109	33.9
Jul	3,892	34.1
Aug	4,031	34.3
Sep	3,789	34.1
Oct	3,472	33.9
Nov	3,376	34.1
Dec	3,780	34.4



2022		
Jan	3,585	34.1
Feb	2,837	34.0 R
Mar	2,275	33.9 P
Apr		
May		
Jun		
Jul		
Aug		
Sep		
Oct		
Nov		
Dec		



* Not seasonally adjusted

P = Preliminary

R = Revised

** Labor-management dispute